



# **Martinský bioptický seminár SD-IAP**

## **Martin, nov. 2022**

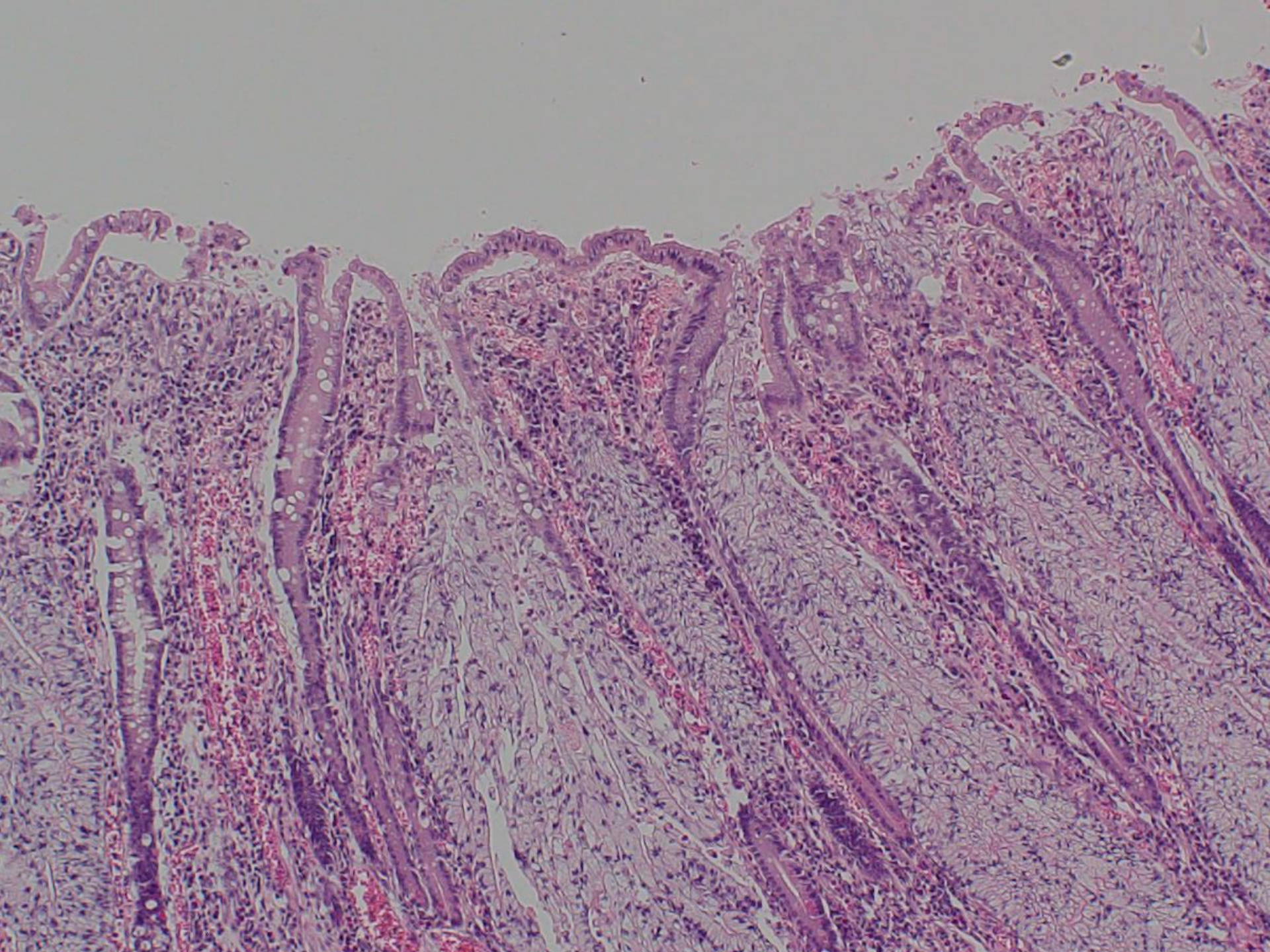
# **SD-IAP 799**

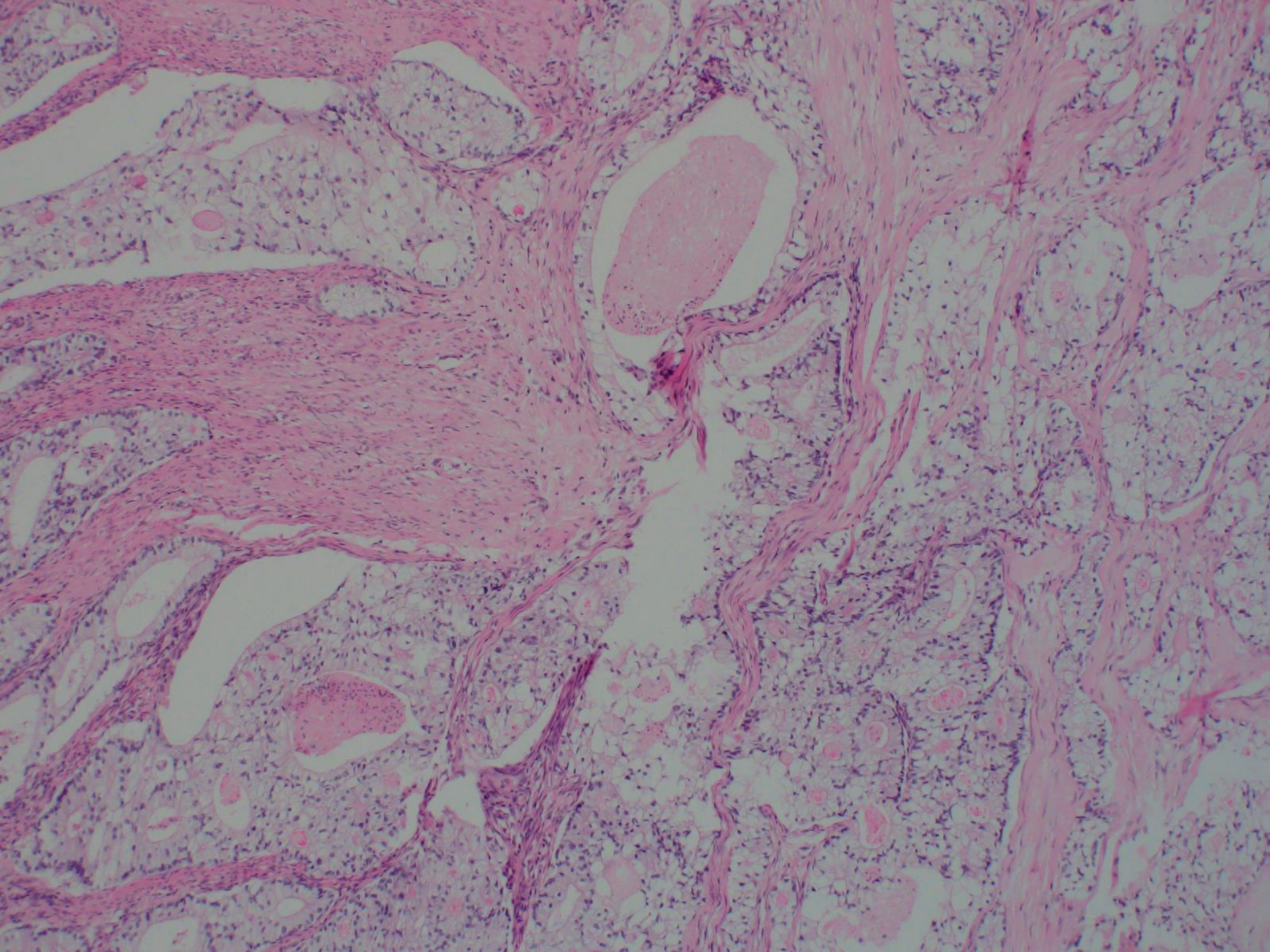
**Michal Kalman**  
**ÚPA UNM a JLFUK**

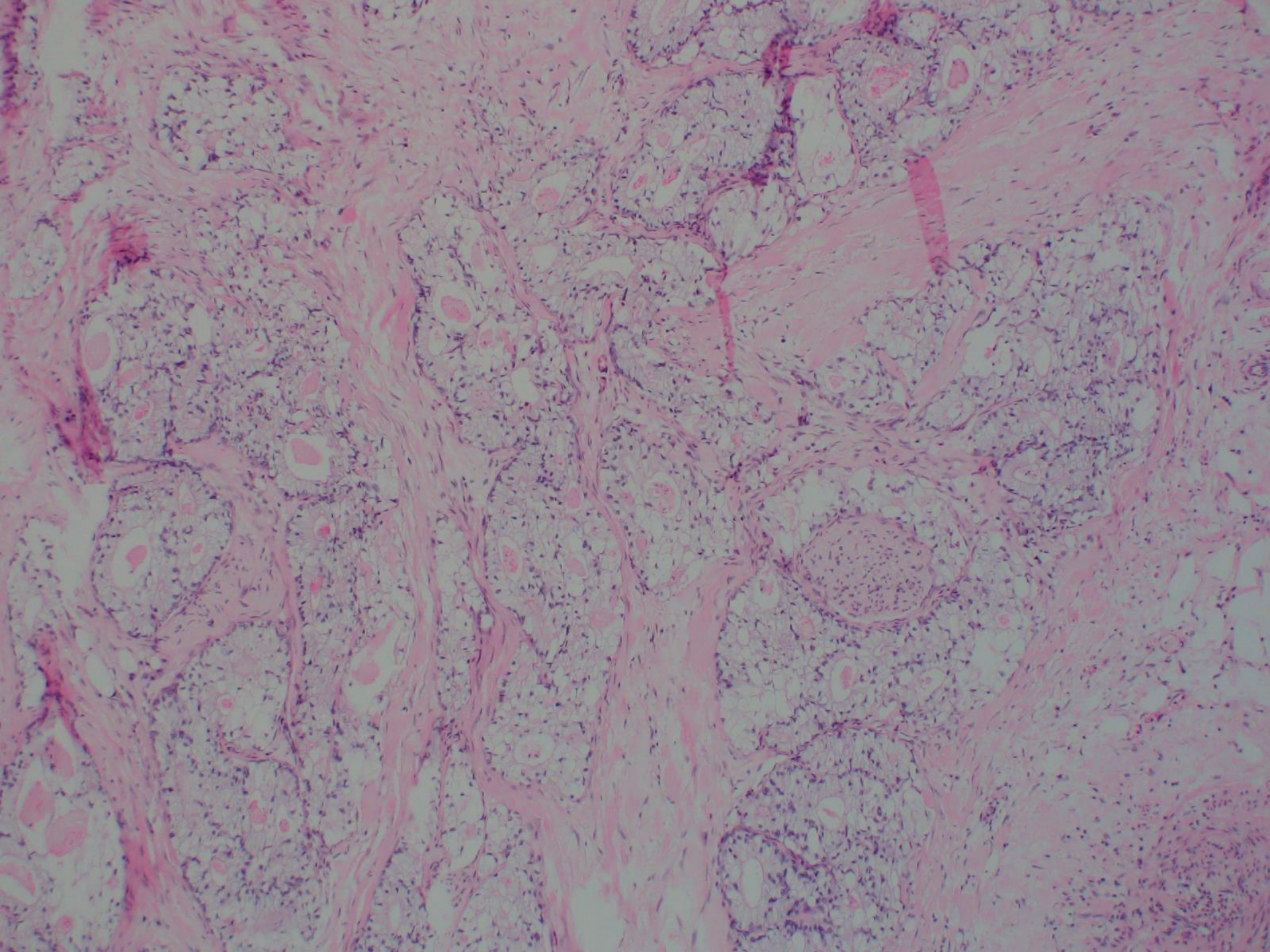
73. ročný muž

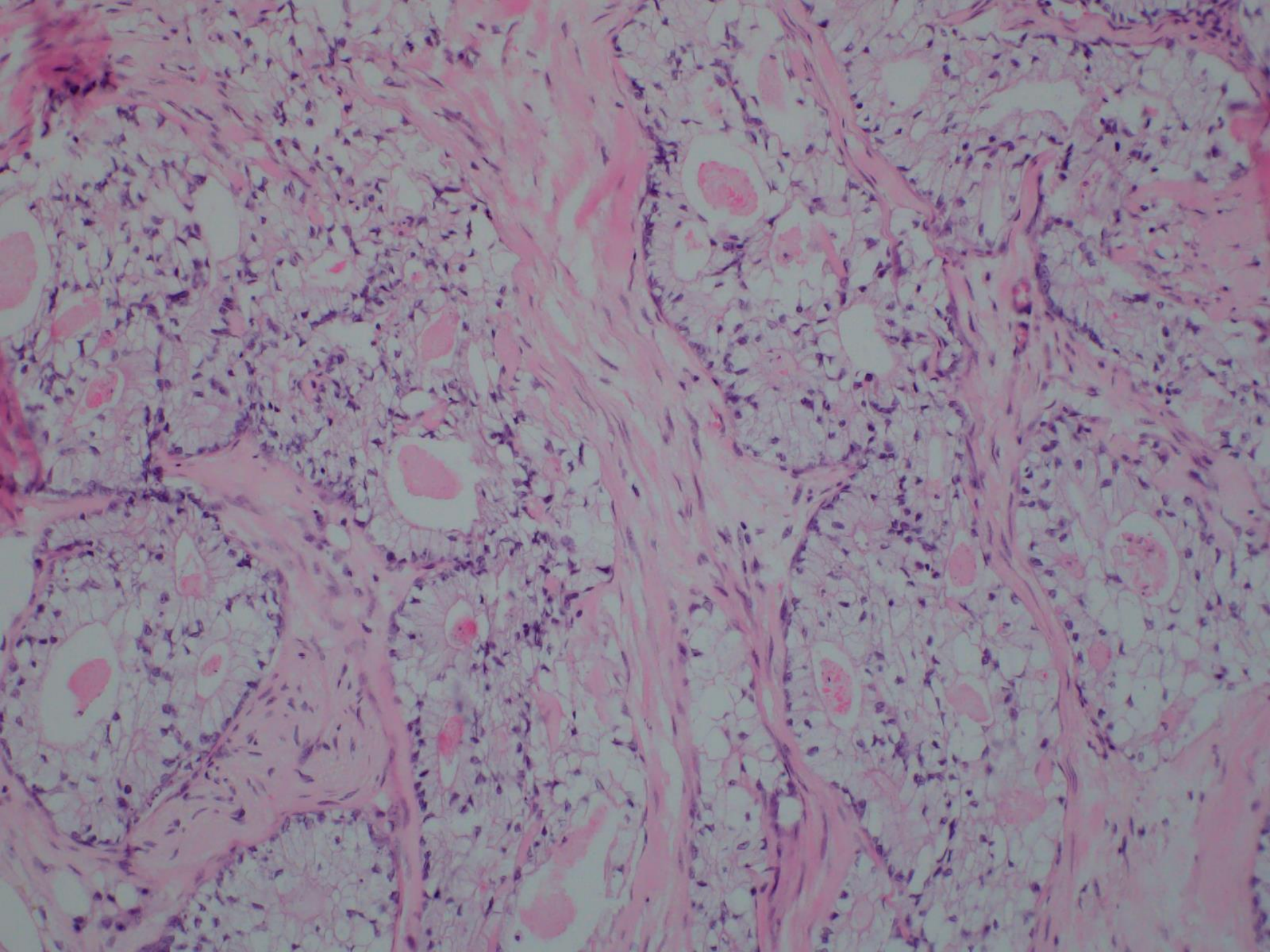
**Predmet vyšetrenia:** MTS v ileu

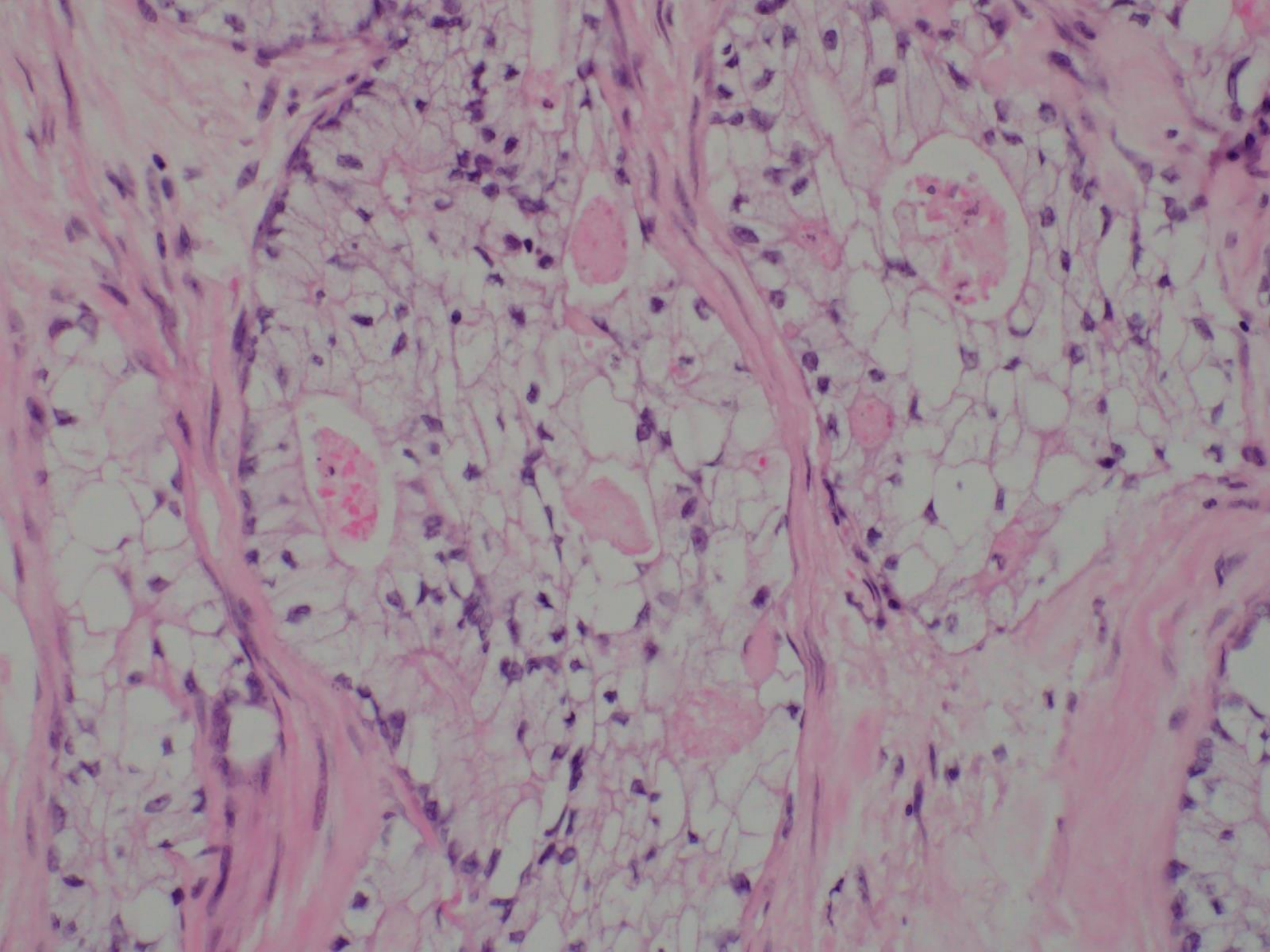
**Klinická Dg.:** TU céka

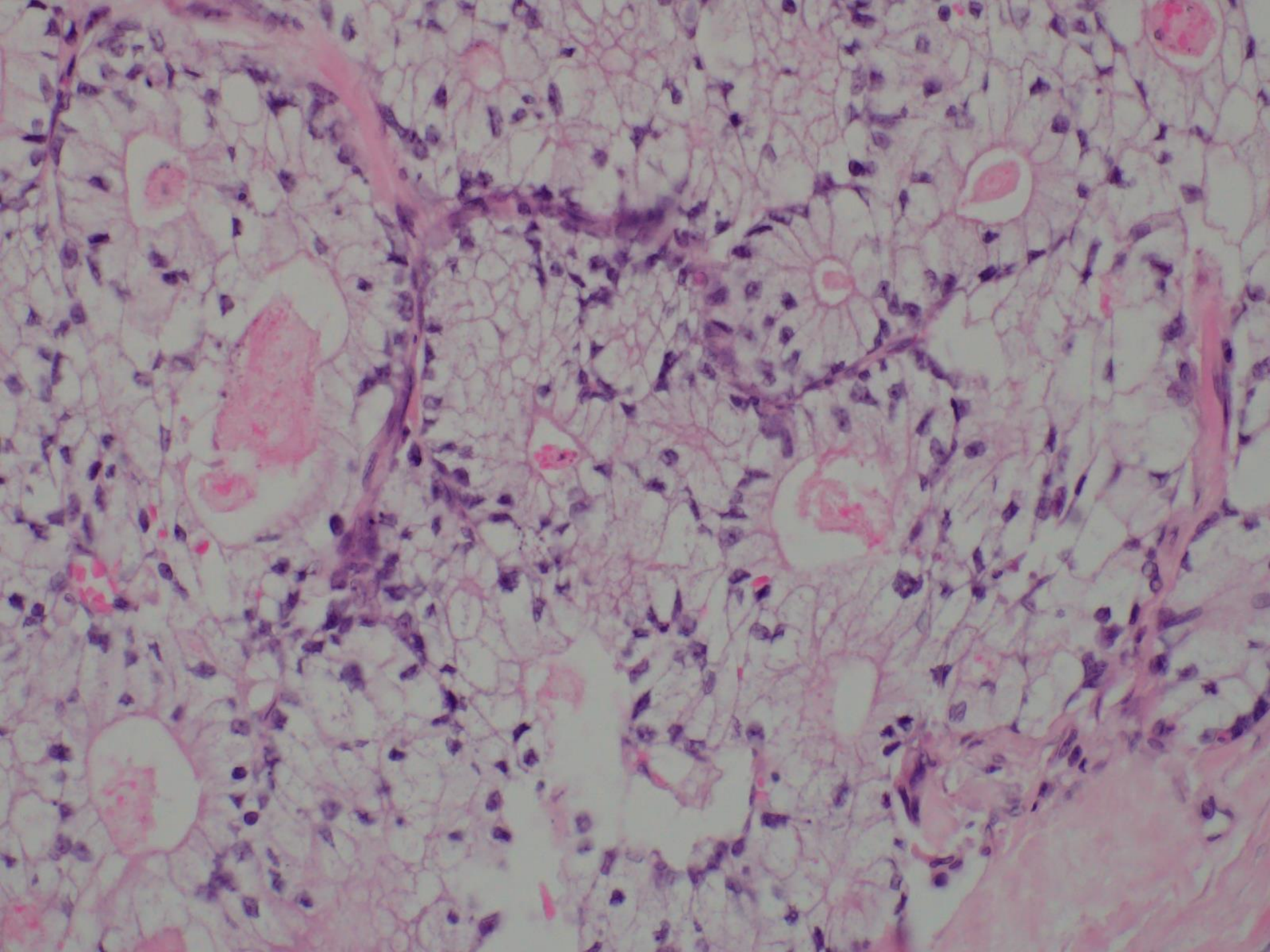




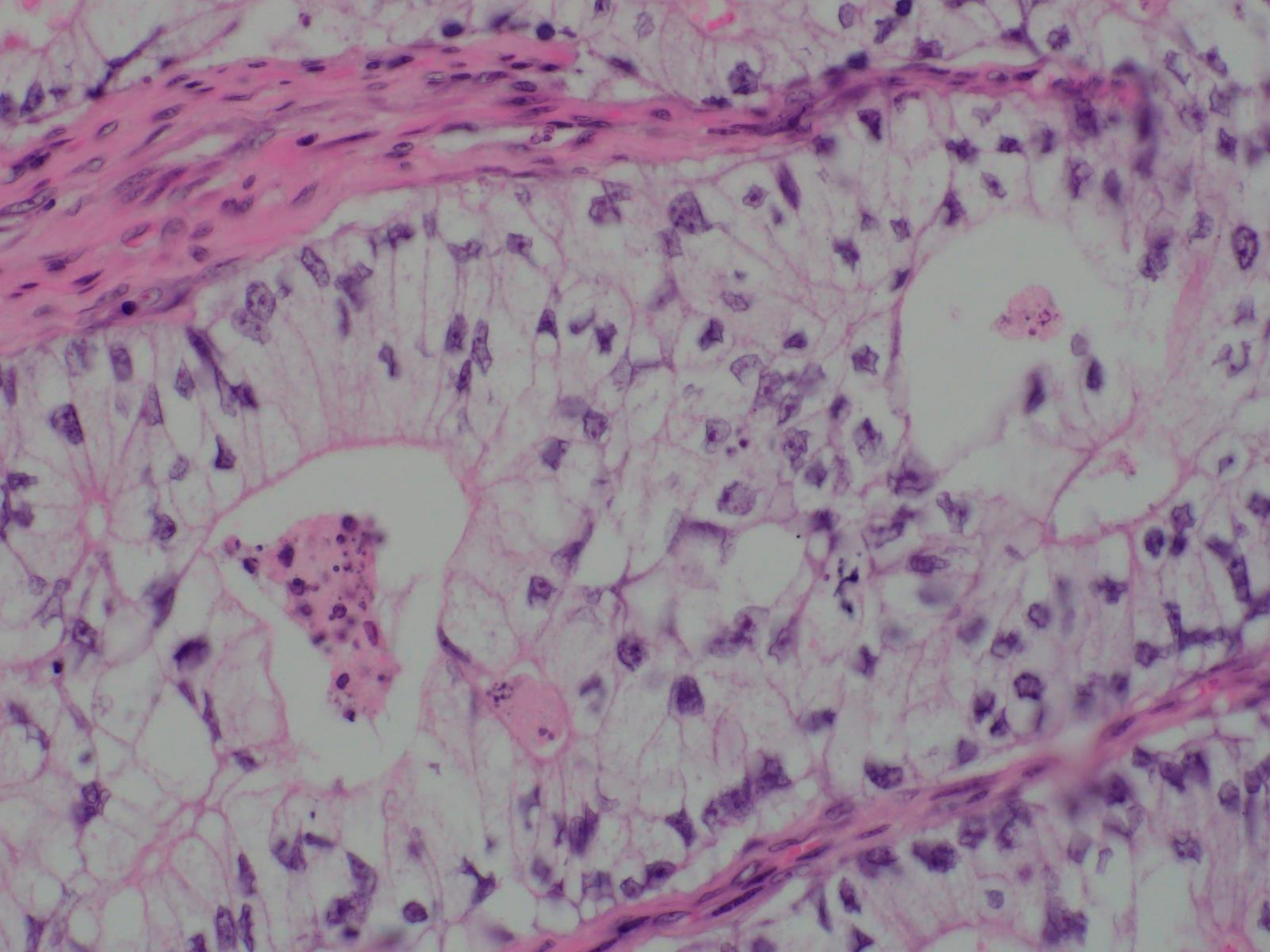




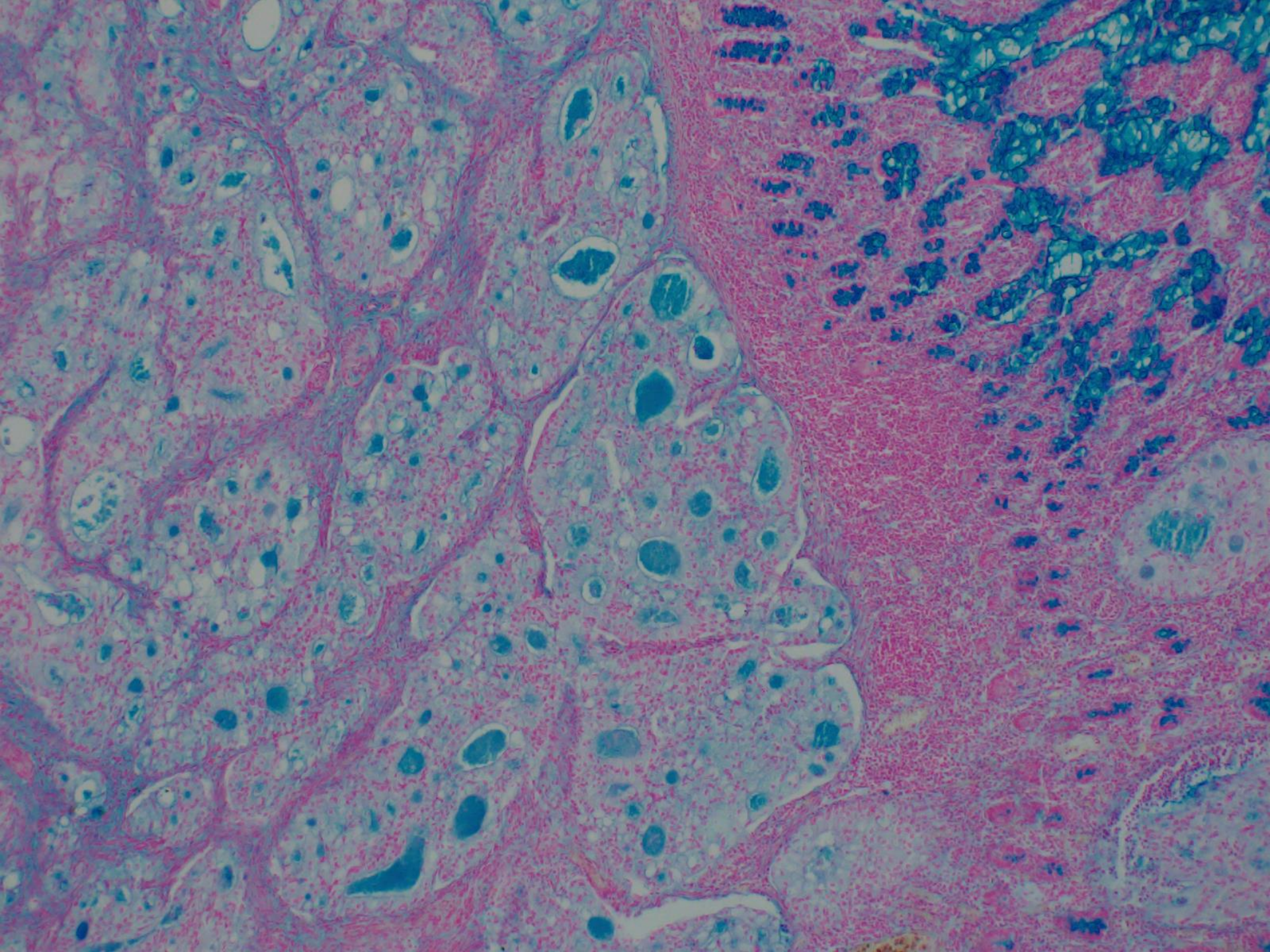


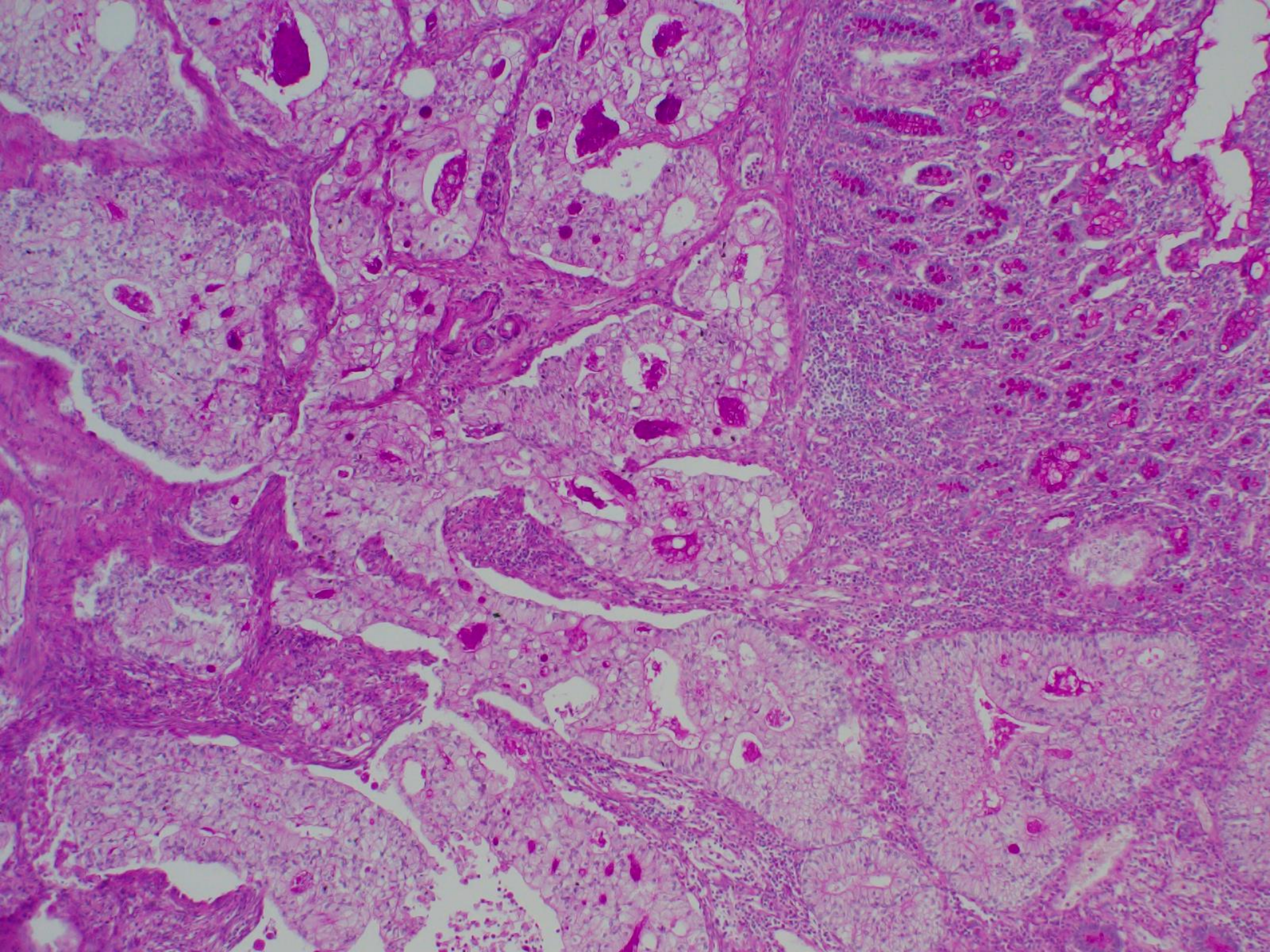


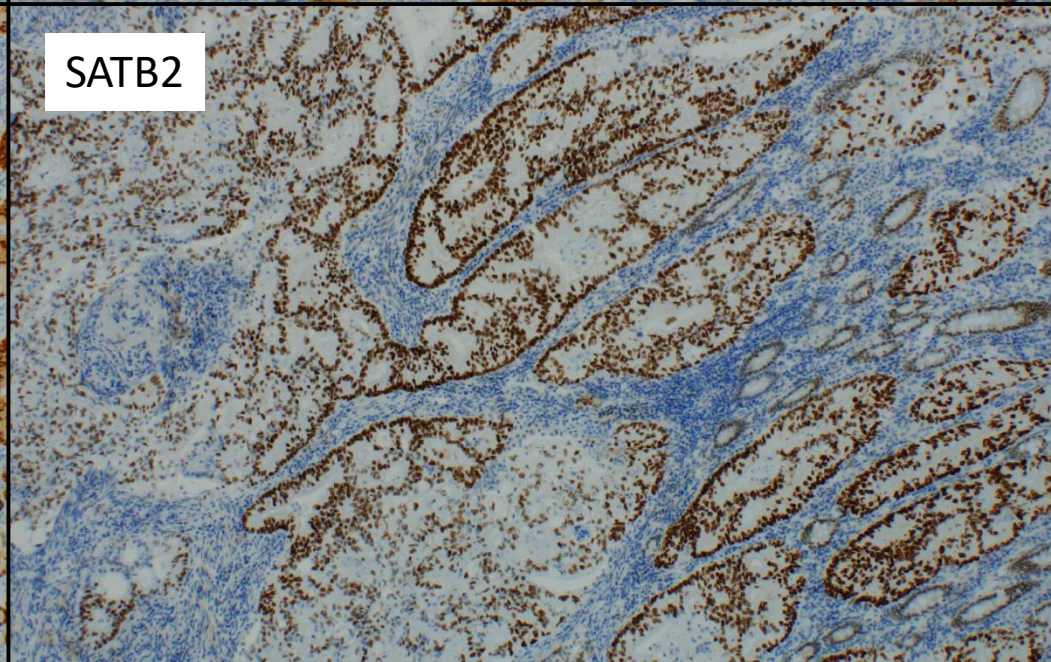
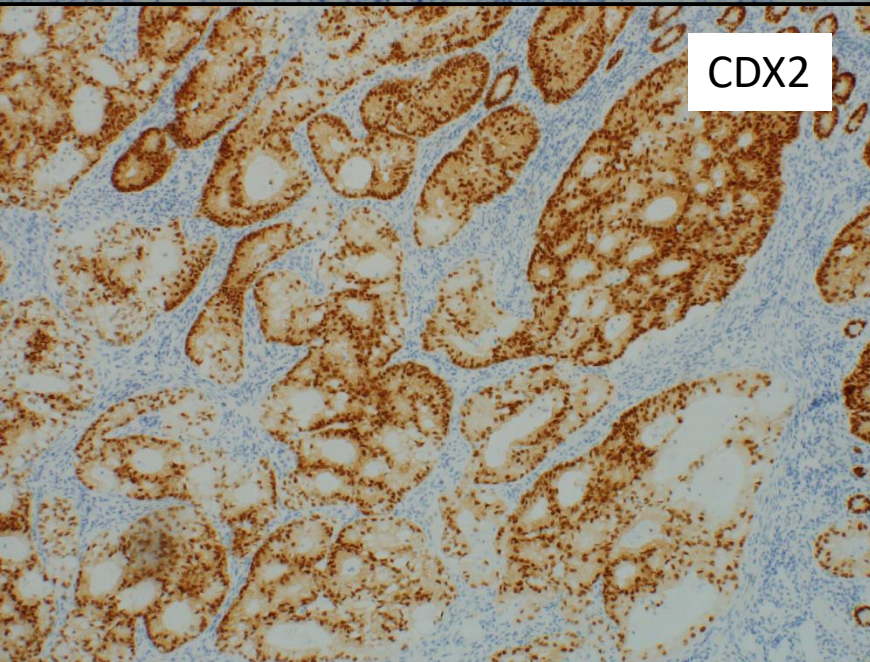
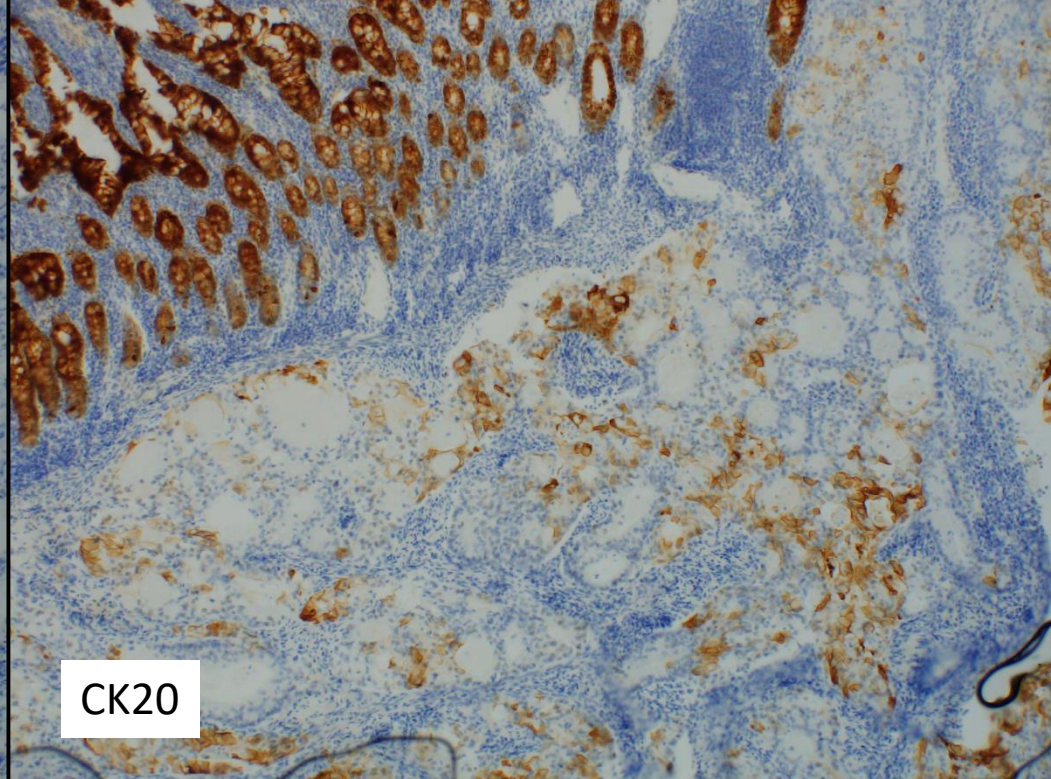
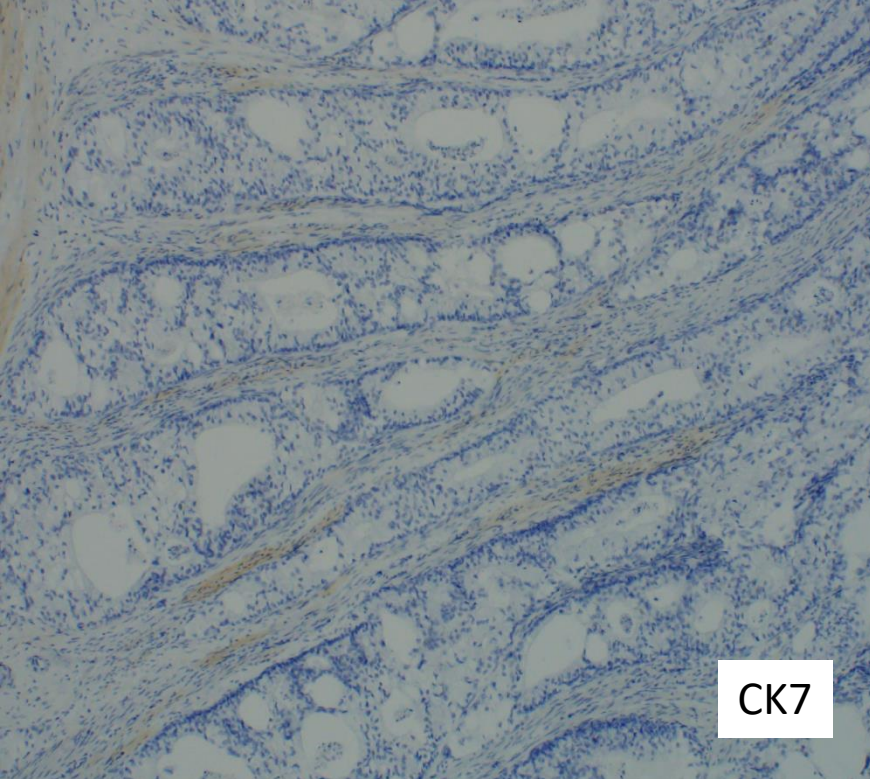


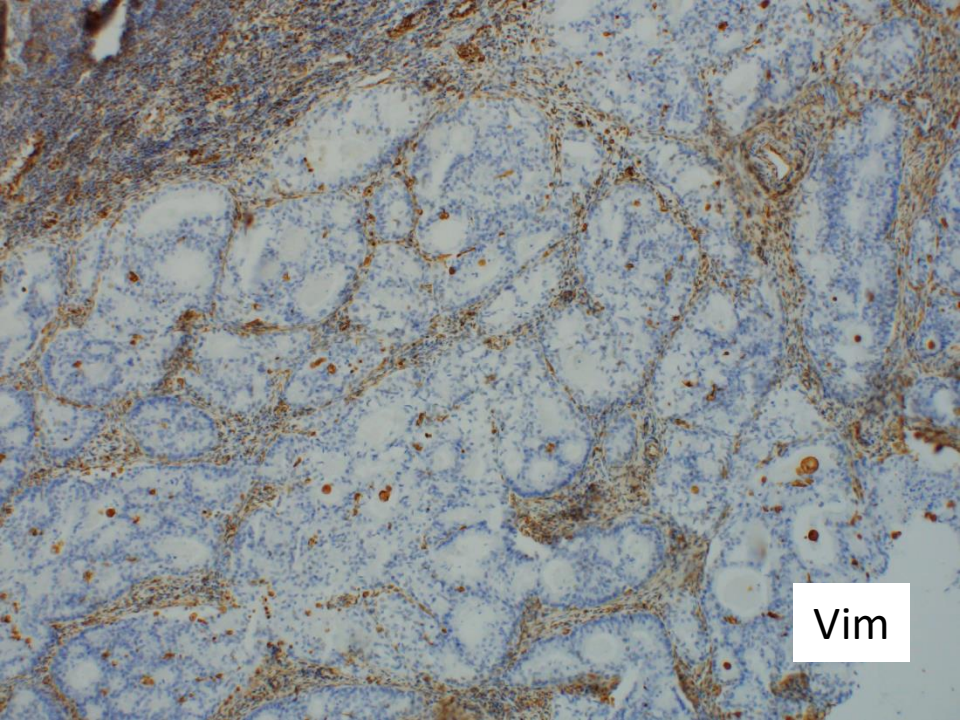




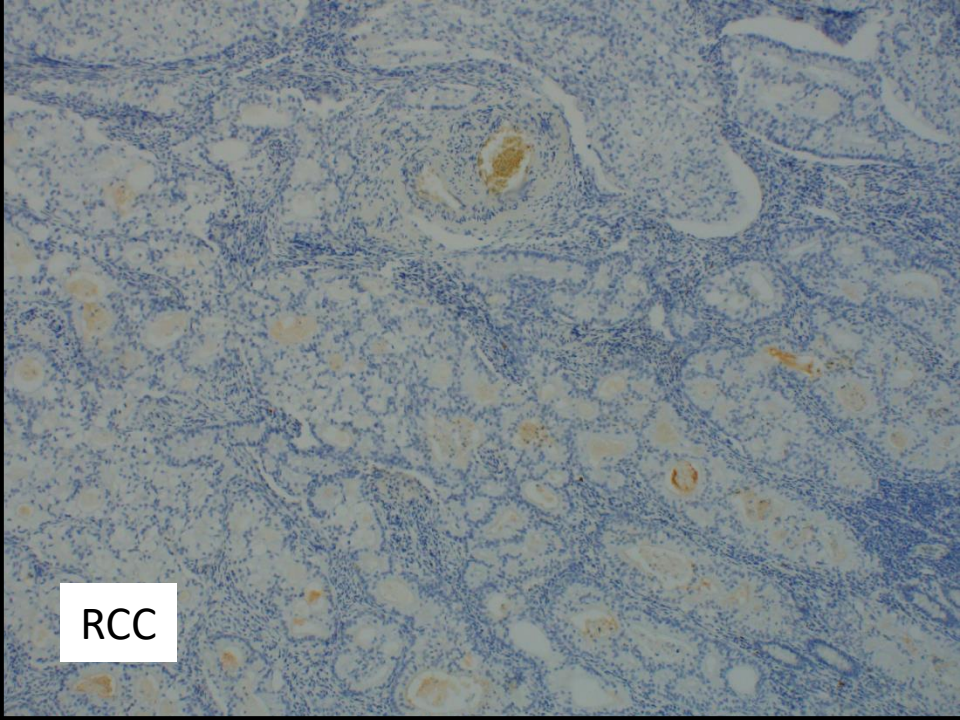




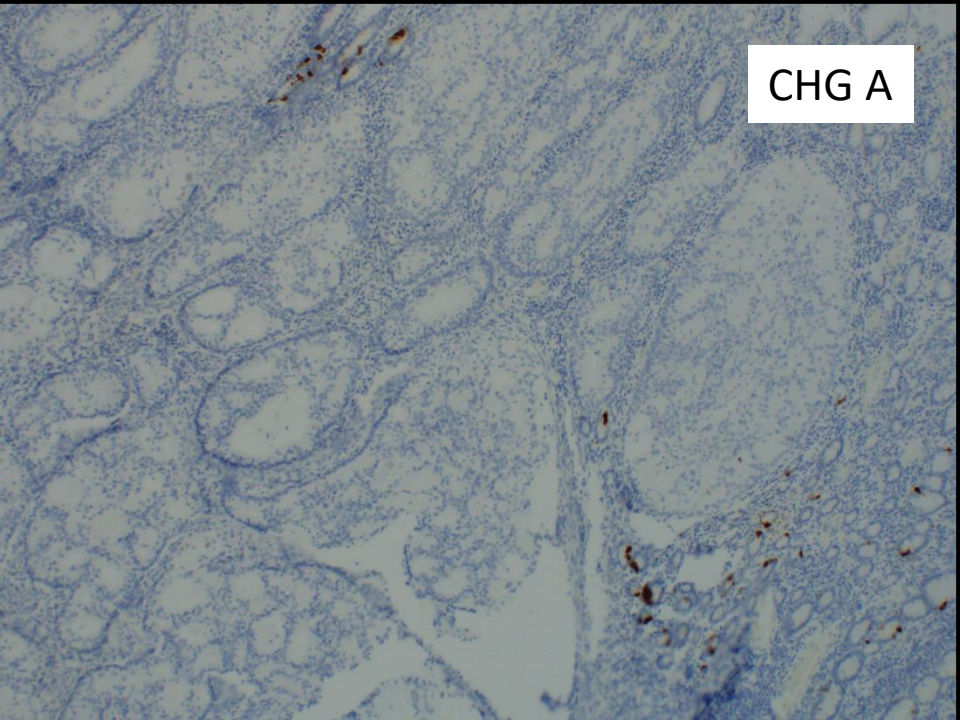




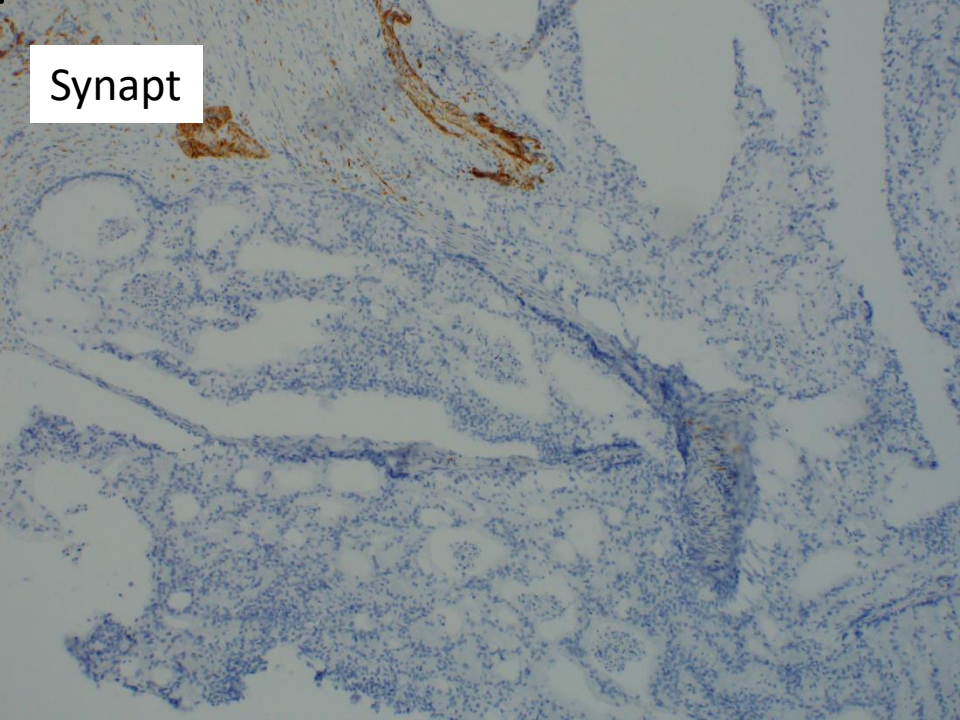
Vim



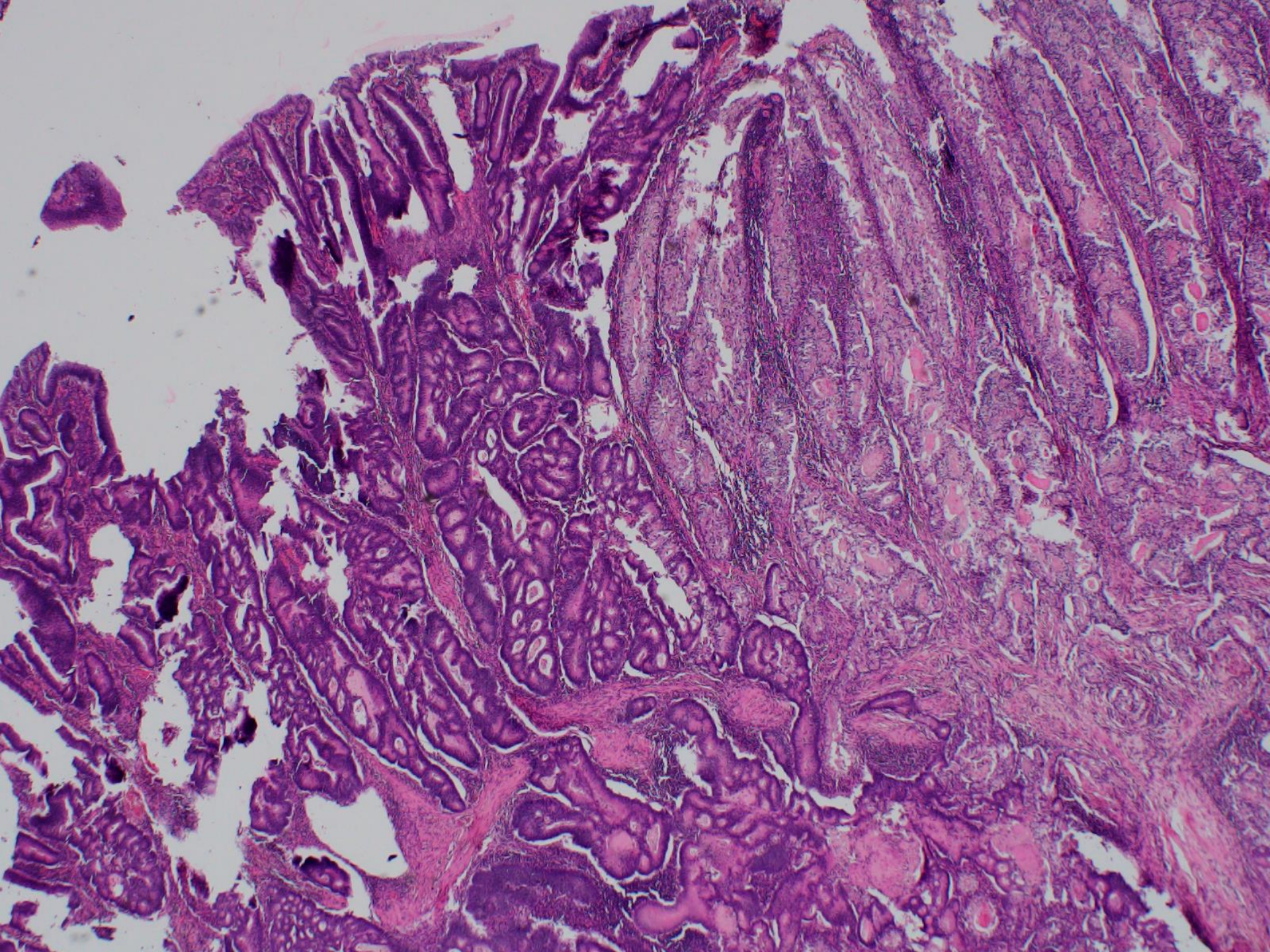
RCC

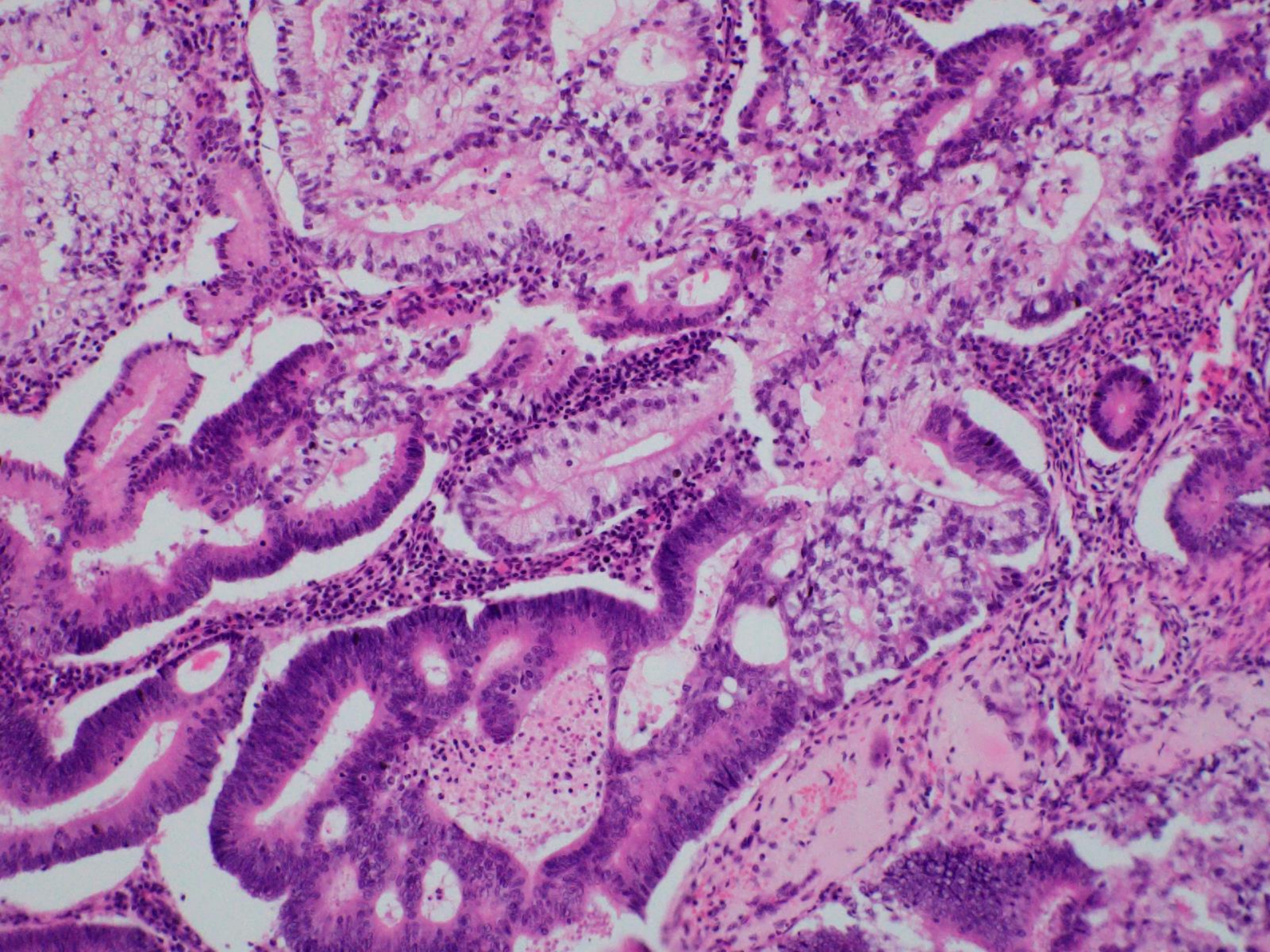


CHG A

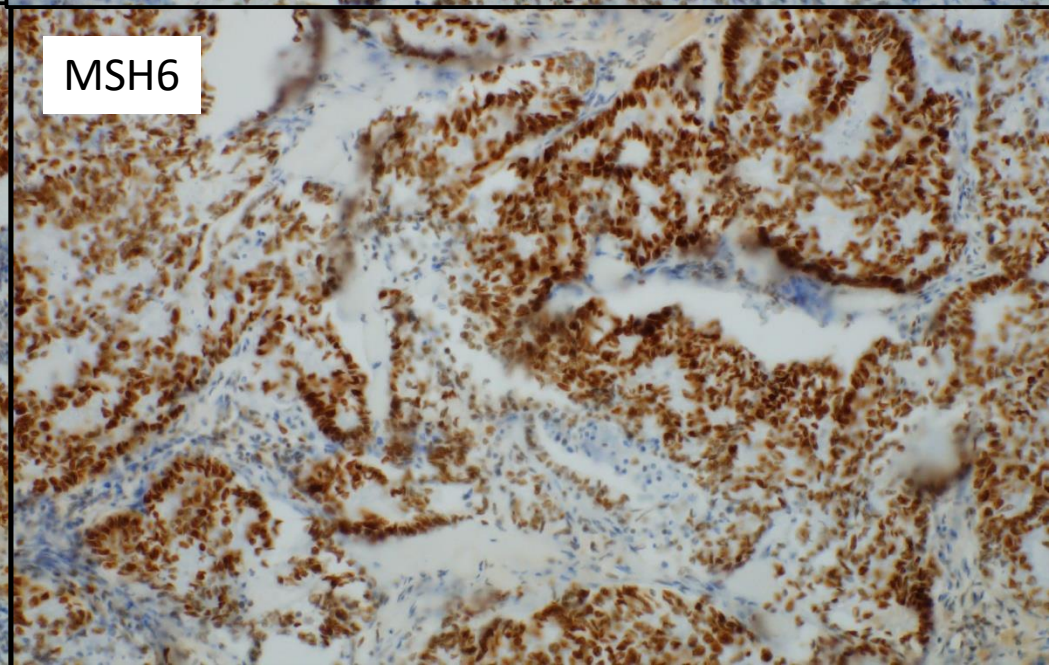
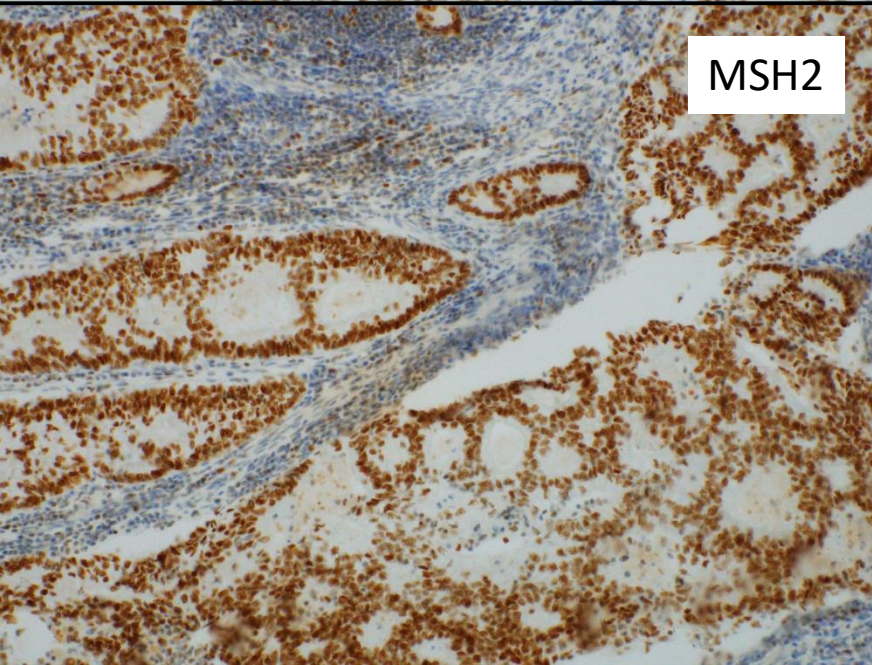
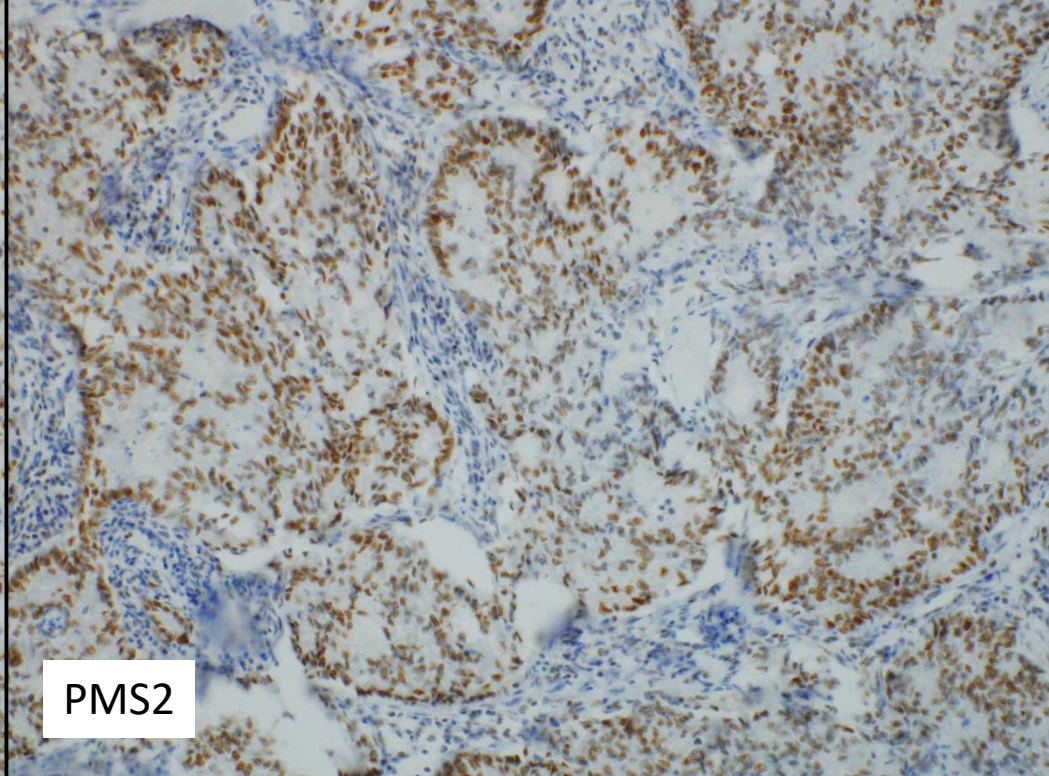
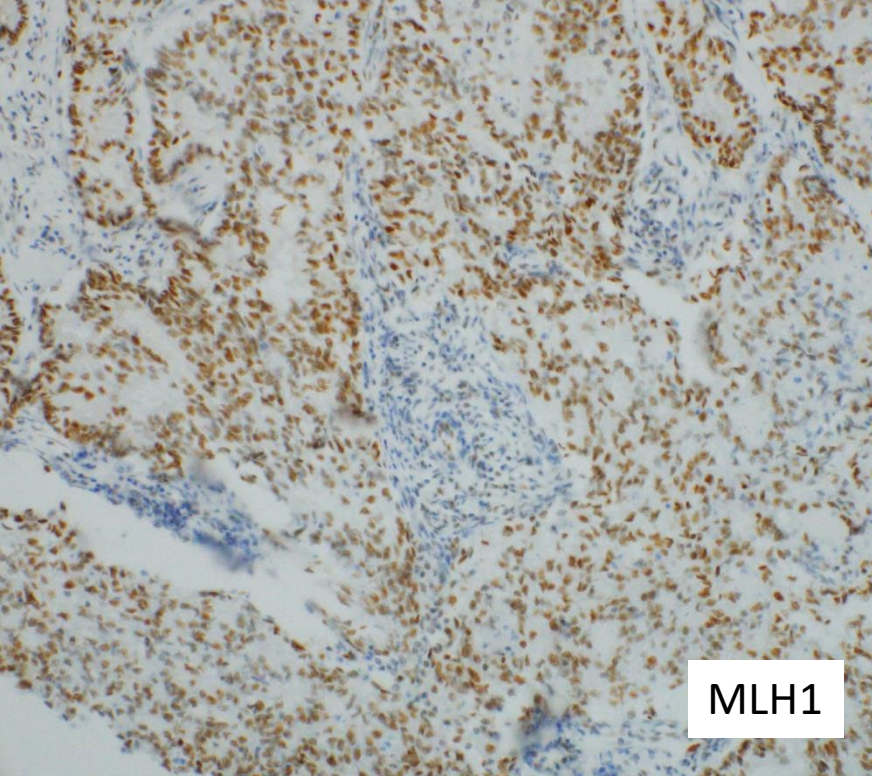


Synapt









## **Imunoprofil:**

CK20+

CDX2+

SATB2+

CK7-

Vimentin –

Synapt. –

CHG A -

## **Molekulárny profil:**

MMR proficientny

KRAS mut. (kodón 12/13 exón 2)

Svetlobunkový karcinóm hrubého čreva

# Svetlobunkový karcinóm hrubého čreva

Zriedkavý

Častejšie muži, ľavé kolon

Morfologicky podobný svetlobunkovému karcinómu genitálneho traktu

Často zmiešaná morfológia svetlobunkového Ca s konvenčným adenokarcinómom

Typický imunofenotyp: CK20+, CDX2+, CK7-

Prognóza???

## Diferenciálna diagnóza

CCC vznikajúci v teréne endometriózy / ovariálny CCC

Mladé ženy, sigma-rectum, mulleriansky fenotyp CK7+,CK20-,CDX2-

Metastazujúci RCC : vimentin, CAIX

Yolk sac tumor : SALL4, AFP, glypican 3

NET so svetlobunkovou morfológiou: CHG A, Syn

